

# 16 Crochet Shawl Patterns: DIY Clothing You'll Love



## 16 Crochet Shawl Patterns: DIY Clothing You'll Love

Copyright 2013 by Prime Publishing LLC

All rights reserved. No part of this book may be reproduced or transmitted in any form or by any means, electronic or mechanical, including photocopying, recording, or by any information storage or retrieval system, without written permission from the publisher, except in the case of brief quotations embodied in critical articles and reviews.

Trademarks are property of their respective holders. When used, trademarks are for the benefit of the trademark owner only.

Published by Prime Publishing LLC, 3400 Dundee Road, Northbrook, IL 60062 –  
[www.primecp.com](http://www.primecp.com)

**ALLFREECROCHET**   
"Free Crochet Patterns For Happy Hooking"  
[Free Crochet Projects](#)

**ALLFREEKNITTING**  **favecrafts**     
Free Knitting Patterns For Happy Stitching  
[Free Knitting Projects](#) [Free Craft Projects](#)

**ALLFREESEWING**  **FAVEQUILTS**  formerly AllFreeBeadedJewelry.com **ALLFREEJEWELRYMAKING**   
Free Patterns To Keep You In Stitches Quilts, Fabric, and More Your Go-To Source for DIY Jewelry Inspiration  
[Free Sewing Projects](#) [Free Quilt Projects](#) [Free Beaded Jewelry Projects](#)

**AllFreeHolidayCrafts**      **ALLFREECHRISTMASCRAFTS**    
Creations and Celebrations for Every Occasion Create The Christmas Of Your Dreams  
[Free Holiday Projects](#) [Free Christmas Projects](#)

**ALLFREECROCHETAFGHANPATTERNS** Your #1 Source for Free Crochet Afghan Patterns **ALLFREEKIDSCRAFTS**  Explore. Imagine. Create.  
[Free Crochet Afghan Projects](#) [Free Kids' Craft Projects](#)

---

Find tons of free crochet patterns, tips and tutorials at [AllFreeCrochet.com](http://AllFreeCrochet.com).

## Letter from the Editors

Hi Crochet Enthusiast,

Are you dying to pick up your hook and grab some fun crochet colors? If you want to experiment with a fresh design then stay tuned because this eBook is full of amazing crochet shawl patterns. Buying outfits at the store sometimes just doesn't cut it, so you might as well use your crochet skill to make some DIY clothing. These designs are fashionable and will look great on anyone.

From solids to multicolored shawls you will find something that calls your name. These patterns have beautiful motifs and when worked up properly, you will feel so proud of yourself. This eBook will become your new best friend because once you crochet one of these shawls; everyone is going to want one.

You can find more illustrated crochet stitches, patterns, tips, tutorials and videos for free at <http://www.allfreecrochet.com>.

Our eBooks, like all our crochet patterns, are absolutely FREE to members of our crochet community. Please feel free to share with family and friends and ask them to sign up at our website for our [free e-mail newsletter](#).

Happy Hooking,

*The Editors of All Free Crochet*

<http://www.allfreecrochet.com>

**16 Crochet Shawl Patterns: DIY Clothing You'll Love eBook Table of Contents**

<b>Goddess Shawl.....</b>	<b>5</b>
<b>Unforgettable Top Down Shawl ....</b>	<b>9</b>
<b>Summer Morning Shawl .....</b>	<b>12</b>
<b>Sapphire Satin Sparkle Shawl .....</b>	<b>16</b>
<b>A Flower Triangle Shawl.....</b>	<b>18</b>
<b>Napa Valley Shawl and Wrap.....</b>	<b>22</b>
<b>A Broomstick Lace Shawl .....</b>	<b>24</b>
<b>Perfect Red Shawl .....</b>	<b>29</b>
<b>A Pineapple Lace Shawl .....</b>	<b>32</b>
<b>An Easy Comfort Shawl .....</b>	<b>36</b>
<b>Kimono Shrug .....</b>	<b>38</b>
<b>Beautiful Bridal Shawl .....</b>	<b>45</b>
<b>Purple Sport Shawl .....</b>	<b>48</b>
<b>Sweet November Scarf and Shawl</b>	<b>50</b>
<b>Endless Summer Shawl .....</b>	<b>52</b>
<b>Flame and Ember Shawl .....</b>	<b>54</b>

## Goddess Shawl

By: Karen Drouin for [Naturally Caron](#)

A crochet shawl pattern is a fantastic addition to your wardrobe. Wear it as a beach cover up or a trendy sweater during the sunny days of fall. The Goddess Shawl is fun and easy to wear any time of the year. Treat yourself to this breathtaking crochet design - you will feel like a true goddess each time you put on this homemade shawl. There's no need to spend money and time at the mall when you can make your own stylish items at home.



Goddess Shawl

This image courtesy of [caron.com](#)

### **MATERIALS:**

- NaturallyCaron.com Spa (75% Microdenier Acrylic/25% Bamboo); 9 oz, Shown in: #0008 Misty Taupe
- One size US J-10 (6 mm) crochet hook, or size to obtain gauge
- Yarn needle

### **FINISHED MEASUREMENTS:**

Shawl measures approximately 49"/124.5 cm wide x 23"/58.5 cm long

### **GAUGE:**

---

Find tons of free crochet patterns, tips and tutorials at [AllFreeCrochet.com](#).

In pattern stitch, 24 sts and 3 1/2 rows = 4"/10 cm. Exact gauge is not critical for this project.

**STITCHES USED:**

Chain (ch), single crochet (sc), slip stitch (slip st), treble crochet (tr)

**SPECIAL TERMS:**

Beg-trCl: Beginning treble cluster—Ch 4, yarn over twice, insert hook in indicated stitch and draw up a loop, [yarn over and draw through 2 loops on hook] twice (2 loops on hook); yarn over twice, insert hook in same stitch and draw up a loop, [yarn over and draw through 2 loops on hook] twice (3 loops on hook); yarn over and draw through all 3 loops on hook.

trCl: Treble cluster—Yarn over twice, insert hook in indicated stitch and draw up a loop, [yarn over and draw through 2 loops on hook] twice (2 loops on hook); \*yarn over twice, insert hook in same stitch and draw up a loop, [yarn over and draw through 2 loops on hook] twice; repeat from \* once more; yarn over and draw through all 4 loops on hook.

Beg-trCl shell: Beginning treble cluster shell—(Beg-trCl, ch 3, trCl) in indicated stitch.

trCl shell: Treble cluster shell—(trCl, ch 3, trCl) in indicated stitch.

trCl shell-INCREASE: Treble cluster shell increase—([trCl, ch 3] twice, trCl) in indicated stitch.

picot: Ch 6, slip st in top of last st made. NOTE This shawl was inspired by a vintage doily pattern.

**INSTRUCTIONS:**

**SHAWL**

Chain 10; taking care not to twist ch, join with slip st in first ch to form a ring.

Row 1: Ch 4 (counts as first tr), work 22 tr in ring, turn—23 tr.

Row 2: Beg-trCl in first tr, \*ch 3, skip next tr, trCl in next tr; repeat from \* across, working last trCl in top of turning ch, turn—12 clusters.

Row 3: Beg-trCl in first trCl, \*ch 2, tr in next ch-3 space, ch 2, trCl in next trCl; repeat from \* across, turn—12 clusters and 11 tr.

Row 4: Beg-trCl in first trCl, \*ch 3, tr in next tr, ch 3, trCl in next trCl; repeat from \* across, turn.

Row 5: Beg-trCl in first trCl, \*ch 4, tr in next tr, ch 4, trCl in next trCl; repeat from \* across, turn.

Row 6: Beg-trCl in first trCl, \*ch 5, tr in next tr, ch 5, trCl in next trCl; repeat from \* across, turn.

Row 7: Beg-trCl shell in first trCl, \*ch 4, tr in next tr, ch 4, trCl shell in next trCl; repeat from \* across, turn—12 shells and 11 tr.

Row 8: Beg-trCl in first trCl, ch 5, trCl in next trCl, \*ch 3, tr in next tr, ch 3, trCl in next trCl, ch 5, trCl in next trCl; repeat from \* across, turn—24 clusters and 11 tr.

Row 9: Beg-trCl in first trCl, ch 9, trCl in next trCl, \*ch 3, tr in next tr, ch 3, trCl in next trCl, ch 9, trCl in next trCl; repeat from \* across, turn.

Row 10: Beg-trCl in first trCl, ch 5, sc in 5th ch of next ch-9 space, picot, ch 5, trCl in next trCl, \*picot, trCl in next trCl, ch 5, sc in 5th ch of next ch-9 space, picot, ch 5, trCl in next trCl; repeat from \* across, turn—24 clusters.

Row 11: Beg-trCl in first trCl, ch 5, 6 tr in next picot, ch 5, \*trCl shell in next picot, ch 5, 6 tr in next picot, ch 5; repeat from \* across to last trCl, trCl in last trCl, turn—11 shells, 2 clusters and 12 6-tr groups.

Row 12: Beg-trCl in first trCl, ch 5, sc in next tr, [ch 6, sc in next tr] 5 times (beginning of pineapple), ch 5, \*trCl shell in ch-3 space of next trCl shell, ch 5, sc in next tr, [ch 6, sc in next tr] 5 times, ch 5; repeat from \* across to last trCl, trCl in last trCl, turn—11 shells, 2 clusters, and 12 pineapple beginnings.

Row 13: Beg-trCl in first trCl, ch 6, [sc in next ch-6 space, ch 6] 5 times, \*trCl shell in ch-3 space of next trCl shell, ch 6, [sc in next ch-6 space, ch 6] 5 times; repeat from \* across to last trCl, trCl in last trCl, turn.

Row 14: Beg-trCl in first trCl, ch 6, skip next ch-6 space, [sc in next ch-6 space of pineapple, ch 6] 4 times, \*trCl shell in ch-3 space of next trCl shell, ch 6, skip next ch-6 space, [sc in next ch-6 space of pineapple, ch 6] 4 times; repeat from \* across to last trCl, trCl in last trCl, turn.

Note: Take extra care when working Row 15. trCl shell-INCREASE is worked instead of regular trCl shells. Definition of trCl shell-INCREASE is given in the Special Terms section (above).

Row 15 (trCl shell INCREASE row): Beg-trCl shell in first trCl, ch 6, skip next ch-6 space, [sc in next ch-6 space of pineapple, ch 6] 3 times, \*trCl shell-INCREASE in ch-3 space of next trCl shell, ch 6, skip next ch-6 space, [sc in next ch-6 space of pineapple, ch 6] 3 times; repeat from \* across to last trCl, trCl shell in last trCl, turn—11 shell INCREASES, 2 shells, and 12 pineapples.

Row 16: Beg-trCl in first trCl, ch 3, sc in next ch-3 space, ch 3, trCl in next trCl, ch 6, skip next ch-6 space, [sc in next ch-6 space of pineapple, ch 6] twice, \*[trCl in next trCl, ch 3, sc in next ch-3 space, ch 3] twice, trCl in next trCl, ch 6, skip next ch-6 space, [sc in next ch-6 space of pineapple, ch 6] twice; repeat from \* across to last shell, trCl in next trCl, ch 3, sc in next ch-3 space, ch 3, trCl in last trCl, turn—37 clusters, and 12 pineapples.

Row 17: Beg-trCl in first trCl, [ch 3, sc in next ch-3 space] twice, ch 3, trCl in next trCl, ch 3, sc in next ch-6 space, ch 3, (sc, ch 3, sc) in next ch-6 space (pineapple point), ch 3, sc in next ch-6 space, ch 3, \*\*trCl in next trCl, \*[ch 3, sc in next ch-3 space] twice, ch 3, trCl in next trCl; repeat from \* once more, ch 3, sc in next ch-6 space, ch 3, (sc, ch 3, sc) in next ch-6 space (pineapple point), ch 3, sc in next ch-6 space, ch 3; repeat from \*\* to last 2 trCl, trCl in next trCl, [ch 3, sc in next ch-3 space] twice, ch 3, trCl in last trCl, turn.

Row 18: Ch 5, sc in next ch-space, \*ch 3, sc in next ch-space; repeat from \* across skipping all trCl to last trCl, ch 3, slip st in last trCl, turn.

Rows 19–22: Ch 5, sc in first ch-space, \*ch 3, sc in next ch-space; repeat from \* across, turn. Do not fasten off.

## EDGING

Note: Work edging around entire shawl as follows: Row 1: Ch 5, sc in first ch-space, \*ch 3, sc in next ch-space; repeat from \* across, ch 3, sc in same (last) ch-space again (for corner); pivot to work along top edge, \*\*ch 3, sc in end of next row; repeat from \*\* across working (sc, ch 3, sc) in center of beginning ring; ch 3, join with slip st in 2nd ch of beginning ch-5, do not turn. Row 2: Beg-trCl in same st as join; \*ch 3, slip st in next ch-3 space, ch 3, trCl in next ch-3 space; repeat from \* across to opposite top corner, ending with ch 3, slip st in corner ch-space; working along top edge, work 3 sc in each ch-space across; join with slip st in Beg-trCl. Fasten off.

## FINISHING

Using yarn needle, weave in ends. If desired, block lightly.



## Unforgettable Top Down Shawl

By: Nazanin S. Fard for [Red Heart Yarn](#)

Every woman deserves an Unforgettable Top Down Shawl in her closet. Begin crocheting this free crochet pattern at the center top and work your way to down to the lacy scalloped edge. This gorgeous crochet pattern is made using Red Heart Boutique Unforgettable yarn, which is a self-stripping worsted weight yarn. The elegant design of this shawl pattern is timeless, and it's the perfect pattern to make for any season. It measures 67 inches wide by 31 inches long.



Unforgettable Top Down Shawl

This image courtesy of Redheart.com

### Materials:

- Crochet Hook: I/9 or 5.5 mm hook
- Yarn Weight: (4) Medium Weight/Worsted Weight and Aran (16-20 stitches to 4 inches)

**SIZE:** Shawl measures 67" (170 cm) wide x 31" (79 cm) long.

### Special Abbreviations:

4-dc cluster: [Yarn over, insert hook in space, yarn over, draw yarn through space, yarn over, draw yarn through 2 loops on hook] 4 times in same space, yarn over, draw yarn through 5 loops on hook.

5-dc cluster: [Yarn over, insert hook in space, yarn over, draw yarn through space, yarn over, draw yarn through 2 loops on hook] 5 times in same space, yarn over, draw yarn through 6 loops on hook.

picot: Ch 3, slip st in 3rd ch from hook.

**SHAWL:**

Ch 3; slip st in first ch to form a ring.

Row 1: Ch 6 (count as dc, ch 3), (dc, ch 1, dc, ch 3, dc) in the ring; turn.

Row 2: Ch 4 (count as dc, ch 1 here and throughout), dc in first st, 4 dc in next ch-3- space, dc in next dc, (dc, ch 3, dc) in next ch-1 space, dc in next dc, 4 dc in next ch-3-space, (dc, ch 1, dc) in 3rd ch; turn.

Row 3: Ch 4, dc in first st, ch 1, dc in next ch-1 space, ch 1, dc in next dc, [ch 1, skip next dc, dc in next dc] 3 times, ch 1, (dc, ch 3, dc) in next ch-3-space, ch 1, dc in next dc, [ch 1, skip next dc, dc in next dc] 3 times, ch 1, dc in next ch-1 space, ch 1, (dc, ch 1, dc) in 3rd ch of turning ch; turn.

Row 4: Ch 4, dc in next ch-1 space, [dc in next dc, dc in next ch-1 space] 6 times, dc in next dc, (dc, ch 3, dc) in next ch-3- space, [dc in next dc, dc in ch-1 space] 7 times, ch 1, (dc, ch 1, dc) in 3rd ch; turn.

Row 5: Ch 4, dc in next ch-1 space, ch 1, dc in next dc, [ch 1, skip next dc, dc in next dc] across to next ch-3 space, ch 1, (dc, ch 3, dc) in next ch-3-space, ch 1, dc in next dc, [ch 1, skip next dc, dc in next dc] across to last ch-1 space, ch 1, dc in next ch-1 space, ch 1, dc in 3rd ch of turning ch; turn.

Row 6: Ch 4, dc in next ch-1 space, [dc in next dc, dc in next ch-1 space] across to last dc before ch-3-space, dc in next dc, (dc, ch 3, dc) in next ch-3- space, [dc in next dc, dc in next ch-1 space] across to last dc before ch-1 space, dc in next dc, dc in next ch-1 space, ch 1, dc in 3rd ch of turning ch; turn.

Rows 7-48: Repeat Rows 5-6 (21 times).

Row 49: Repeat Row 5.

Row 50: Ch 3, 4-dc cluster in first ch-1 space, \*ch 3, picot, ch 3, skip next ch-space, 5-dc cluster in next ch-space; repeat from \* across to last ch-1 space. Fasten off.

**FINISHING:**

## 16 Crochet Shawl Patterns: DIY Clothing You'll Love

Weave in ends. Block shawl to size.

**ABBREVIATIONS** ch = chain; dc = double crochet; st(s) = stitch(es); ( ) = work directions in parentheses into same st; [ ] = work directions in brackets the number of times specified; \* = repeat whatever follows the \* as indicated.

## Summer Morning Shawl

By: [Bernat](#)

Wrap yourself up in this beautiful Summer Morning shawl. The light and lacy crochet design is perfect for cool summer evenings or crisp autumn afternoons. You can never have too many classic shawls like this in your closet. It's a timeless fashion piece that looks great on any body type. Bernat's Cotton-ish yarn by Vickie Howell is the perfect choice to use for this free crochet pattern.

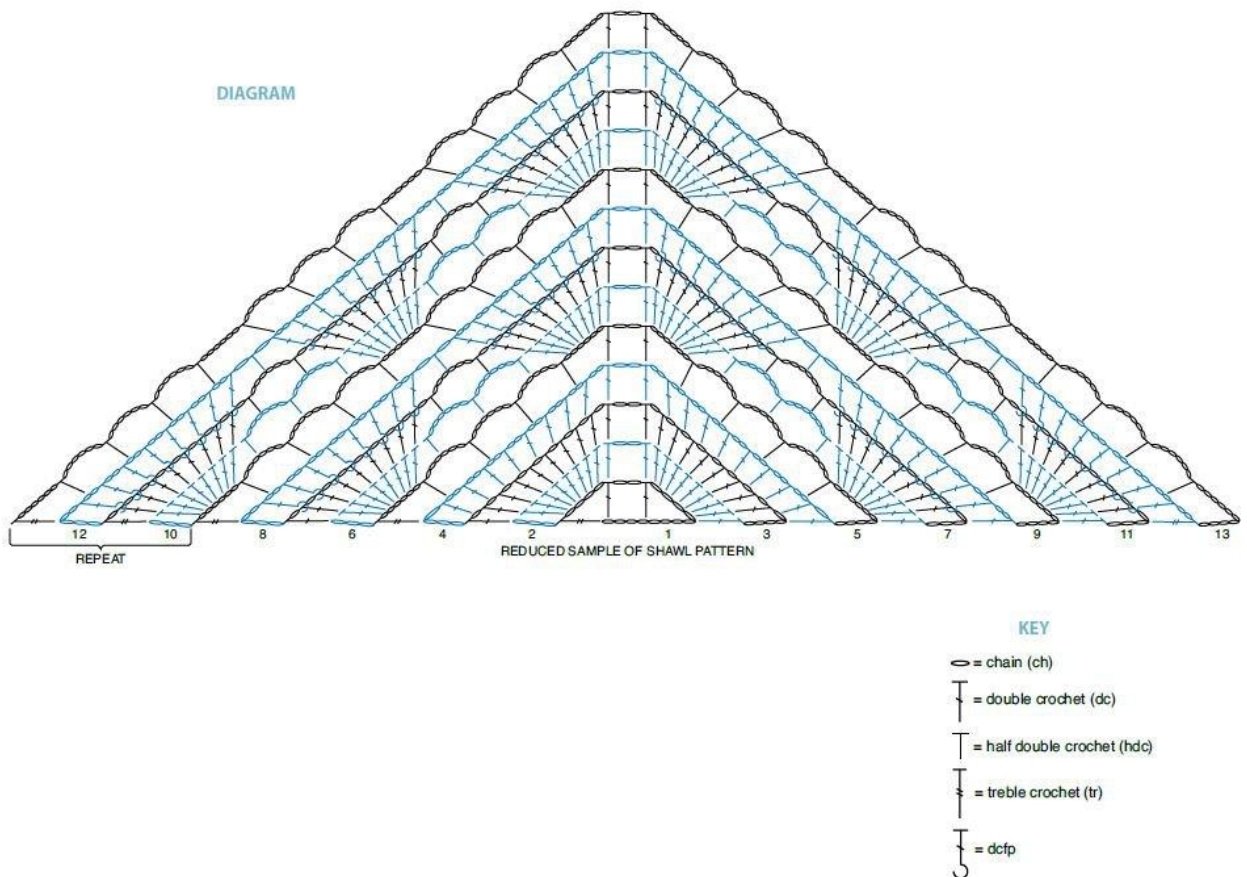


Summer Morning Shawl

This image courtesy of [bernat.com](#)

### **MATERIALS:**

- Bernat® Cotton-ish™ by Vickie Howell (70 g/2.4 oz; 258 m/282 yds) Lemon Twill (85620) 2 balls
- Size 4 mm (U.S. G/6) crochet hook or size needed to obtain gauge.



**GAUGE:** 16 sc and 18 rows = 4" [10 cm].

**ABBREVIATIONS:** www.bernat.com/abbreviations Approx = Approximately Beg = Begin(ing) Ch = Chain(s) Dc = Double crochet Dcfp = Yoh and draw up a loop around post of stitch at front of work, inserting hook from right to left. (Yoh and draw through 2 loops on hook) twice. Hdc = Half double crochet Pat = Pattern Rep = Repeat Sc = Single crochet Sp = Space(s) Tr = Treble crochet Yoh = Yarn over hook

**INSTRUCTIONS :**

Beg at point, ch 12. (See diagram).

1st row: 1 dc in 9th ch from hook. Ch 2. Miss next 2 ch. (1 dc. Ch 4. 1 tr) in last ch. Turn.

2nd row: Ch 3 (counts as dc). 8 dc in next ch-4 sp. 1 dc in next dc. Ch 2 (center). 1 dc in next dc. 8 dc in next ch-9 sp. 1 dc in 5th ch. Turn.

3rd row: Ch 4 (counts as dc and ch 1). (1 dc in next dc. Ch 1) 8 times. 1 dc in next dc. Ch 2 (center). 1 dc in next dc. (Ch 1. 1 dc in next dc) 8 times. Ch 1. 1 dc in top of ch 3. Turn.

4th row: Ch 4 (counts as dc and ch 1). (1 dc in next ch-1 sp. Ch 2) 8 times. Miss next dc and ch-1 sp. (1 dc in next dc. Ch 2) twice. Miss next ch-1 sp and dc. (1 dc in next ch-1 sp. Ch 2) 7 times. 1 dc in last ch-1 sp. Ch 1. 1 dc in 3rd ch of ch 4. Turn.

5th row: Ch 10 (counts as tr and ch 6). Miss first ch-2 sp. (1 hdc in next ch-2 sp. Ch 6. Miss next ch-2 sp) 4 times. 1 dc in next dc. Ch 2 (center). 1 dc in next dc. (Ch 6. Miss next ch-2 sp. 1 hdc in next ch-2 sp) 4 times. Ch 6. 1 tr in 3rd ch of ch 4. Turn.

6th row: Ch 3 (counts as dc). 8 dc in first ch-6 sp. (1 hdc in next ch-6 sp. Ch 6) twice. 1 hdc in next ch-6 sp. 8 dc in next ch-6 sp. 1 dc in next dc. Ch 2 (center). 1 dc in next dc. 8 dc in next ch-6 sp. (1 hdc in next ch-6 sp. Ch 6) twice. 1 hdc in next ch-6 sp. 8 dc in last ch-6 sp. 1 dc in 4th ch of ch 10. Turn.

7th row: Ch 4 (counts as dc and ch 1). (1 dc in next dc. Ch 1) 7 times. 1 dc in next dc. 1 hdc in next ch-6 sp. Ch 6. 1 hdc in next ch-6 sp. (1 dc in next dc. Ch 1) 8 times. 1 dc in next dc. Ch 2 (center). 1 dc in next dc. (Ch 1. 1 dc in next dc) 8 times. 1 hdc in next ch-6 sp. Ch 6. 1 hdc in next ch-6 sp. (1 dc in next dc. Ch 1) 8 times. 1 dc in top of ch 3. Turn.

8th row: Ch 5 (counts as dc and ch 2). (1 dcfp around next dc. Ch 2) 7 times. 1 dcfp around next dc. Ch 1. 1 hdc in next ch-6 sp. Ch 1. (1 dcfp around next dc. Ch 2) 8 times. 1 dc in next dc. Ch 2 (center). 1 dc in next dc. (Ch 2. 1 dcfp around next dc) 8 times. Ch 1. 1 hdc in next ch-6 sp. Ch 1. (1 dcfp around next dc. Ch 2) 8 times. 1 dc in 3rd ch of ch 4. Turn.

9th row: Ch 10 (count as tr and ch 6). Miss first ch-2 sp. (1 hdc in next ch-2 sp. Ch 6. Miss next ch-2 sp) 4 times. Miss next: (Ch 1. 1 hdc. Ch 1). 1 hdc in next ch-2 sp. (Ch 6. Miss next ch-2 sp. 1 hdc in next ch-2 sp) 3 times. Ch 6. 1 dc in next dc. Ch 2 (center). 1 dc in next dc. (Ch 6. Miss next ch-2 sp. 1 hdc in next ch-2 sp) 4 times. Ch 6. Miss next: (Ch 1. 1 hdc. Ch 1). (1 hdc in next ch-2 sp. Ch 6. Miss next ch-2 sp) 4 times. Ch 6. 1 tr in 3rd ch of ch 5. Turn.

10th row: Ch 3 (counts as dc). 8 dc in first ch-6 sp. \*[(1 hdc in next ch-6 sp. Ch 6) twice. 1 hdc in next ch-6 sp. 8 dc in next ch-6 sp]. Rep from \* once more. 1 dc in next dc. Ch 2 (center). 1 dc in next dc. \*\*[8 dc in next ch-6 sp. (1 hdc in next ch-6 sp. Ch 6) twice. 1 hdc in next ch-6 sp]. Rep from \*\* once more. 8 dc in last ch-6 sp. 1 dc in 3rd ch of ch 10. Turn.

11th row: Ch 4 (counts as dc and ch 1). \*[(1 dc in next dc. Ch 1) 7 times.\*\* 1 dc in next dc. 1 hdc in next ch-6 sp. Ch 6. 1 hdc in next ch-6 sp]. Rep from \* once more, then from \* to \*\* once. 1 dc in next dc. Ch 2 (center). 1 dc in next dc. Ch 1. Rep from \* to last dc. Ch 1. 1 dc in top of ch 3. Turn.

## 16 Crochet Shawl Patterns: DIY Clothing You'll Love

12th row: Ch 5 (counts as dc and ch 2). \*[(1 dcfp around next dc. Ch 2) 7 times. 1 dcfp around next dc.\*\* Ch 1. 1 hdc in next ch-6 sp. Ch 1]. Rep from \* once more, then from \* to \*\* once. (Ch 2. 1 dc in next dc) twice. Ch 2. Rep from \* to last dc. Ch 2. 1 dc in 3rd ch of ch 4. Turn.

13th row: Ch 10 (counts as tr and ch 6). Miss first ch-2 sp. \*[(1 hdc in next ch-2 sp. Ch 6. Miss next ch-2 sp) 4 times. Miss next: (Ch 1. 1 hdc. Ch 1). Rep from \* twice more]. Ch 6.\*\* 1 dc in next dc. Ch 2 (center). 1 dc in next dc. Ch 6. Rep from \* to \*\*. 1 tr in 3rd ch of ch 5. Turn. Rep rows 10 to 13 for pat, noting rep in [ ] will be repeated 1 more time in subsequent rows, until Shawl measures approx 50" [127 cm] across top straight edge, ending on a 12th row of pat. Fasten off.

## Sapphire Satin Sparkle Shawl

By: [Bernat](#)

You need to add this Sapphire Satin Sparkle Shawl to your list of items to crochet. Not only is it a beautiful crochet shawl pattern, but it's an easy one too. The cluster stitch is worked in rows making this a great design to flaunt in. This beautiful shawl would make a great addition to any fashionista's wardrobe. The subtle sparkle makes it the perfect item to wear during the holiday season.



Sapphire Satin Sparkle Shawl

This image courtesy of [bernat.com](#)

### **MATERIALS:**

- Bernat® Satin Sparkle (80 g/2.8 oz; 146 m/160 yds 53110 (Sapphire) 6 balls
- Size 5.5 mm (U.S. I or 9) crochet hook or size needed to obtain gauge.

### **GAUGE :**

12 sc and 13 rows = 4 ins [10 cm].

### **INSTRUCTIONS:**

Beg at point, ch 5.



## 16 Crochet Shawl Patterns: DIY Clothing You'll Love

1st row: (RS). (Yoh and draw up a loop. Yoh and draw through 2 loops on hook) 3 times in 5th ch from hook. Yoh and draw through all loops on hook – cluster made. Ch 2. 1 dc in same ch. Turn.

2nd row: Ch 4. Cluster in first ch-2 sp. Ch 1. (1 sc. Ch 3. Cluster. Ch 2. 1 dc) in turning ch sp. Turn.

3rd row: Ch 4. Cluster in first ch-2 sp. Ch 1. (1 sc. Ch 3. Cluster) in next ch-3 sp. Ch 1. (1 sc. Ch 3. Cluster. Ch 2. 1 dc) in turning ch sp. Turn. 3 clusters.

4th row: Ch 4. Cluster in first ch-2 sp. Ch 1. \*(1 sc. Ch 3. Cluster) in next ch-3 sp. Ch 1. Rep from \* to last turning ch sp. (1 sc. Ch 3. Cluster. Ch 2. 1 dc) in turning ch sp. Turn. Rep last row until there are 61 clusters in row. Fasten off.

## A Flower Triangle Shawl

By: Darlene Dale for [Caron Yarn](#)

This Flower Triangle Shawl is an easy crochet pattern to make. It's a lightweight shawl that's perfect to wear on a cool summer night. In this pattern you will find four different crochet flower patterns to crochet using Caron yarn. Use any color yarn you want to complete this stylish fashion item. Make one for yourself, or give it as a gift. It would make an excellent Mother's Day gift idea.



A Flower Triangle Shawl

This image courtesy of [caron.com](#)

### FINISHED MEASUREMENTS:

Approximately 76"/193cm across upper edge x 38"/96.5cm long, excluding fringe

### MATERIALS:

- Caron International's Simply Soft (100% acrylic; 6 oz/170 g, 315 yds/288 m skein): 24 oz (4 skeins); Shown in: #9913 Lt. Country Blue
- One size US H-8 (5mm), or size to obtain gauge
- Yarn needle

**GAUGE:** In Mesh st, 8 mesh sts (dc, ch) and 8 rows = 4"/10cm Gauge is not critical for this project.

### STITCHES USED:

**Chain (ch):** Begin by making a slip knot on your hook. \* Wrap the yarn around the hook (yarn over) and pull up a loop, [draw the yarn through the loop on the hook to form the first chain]. Repeat from \* for number of chains required.

**Note:** The loop on the hook is not included when counting the number of chains.

**Double Crochet (dc):** Yarn over hook, insert hook into stitch indicated, yarn over and pull up a loop, [yarn over and draw through two loops on hook] twice.

**Half Double Crochet (hdc):** Yarn over hook, insert hook into stitch indicated, yarn over and pull up a loop, yarn over and draw through all three loops on hook.

**Reverse single crochet (Rev sc):** Work as single crochet except, work across the row from left to right instead of right to left.

**Single Crochet (sc):** Insert hook in stitch indicated, yarn over and pull up a loop, yarn over and draw through both loops on hook.

**Slip Stitch (slip st):** Insert hook in the stitch indicated, yarn over and draw through both the stitch and the loop on the hook.

**Treble Crochet (tr):** Yarn over hook two times, insert hook in stitch indicated, yarn over and pull up a loop, [yarn over and draw through two loops] three times.

## **SHAWL**

Beginning at upper edge, chain 246.

**Row 1:** Dc in sixth ch from hook (counts as first mesh st), \* ch 1, skip 1 ch, dc in the next ch; repeat from \* across, turn—121 mesh sts.

**Row 2:** Decrease 1 mesh st at each side as follows: Slip st in first ch-1 space and in the next dc, ch 4 (counts as first mesh st), \* dc in next dc, ch 1; repeat from \* across to last mesh st, turn, leaving remaining sts unworked, turn—2 mesh sts decreased; 119 mesh sts remain after Row 2.

Repeat Row 2 until one mesh st remains.

Fasten off.

### **Edging:**

With RS facing, join yarn at upper right-hand corner.

Round 1: Ch 1, sc in same st as joining, sc evenly around entire edge of shawl, working 3 sc in remaining next 2 corners, end work 2 sc in same st as first sc, join with a slip st to first st; do NOT fasten off.

Row 2: With RS facing, working from left to right, work 1 row Rev sc across upper edge of Shawl. Fasten off.

## **FLOWERS (make 3 of each type)**

### **Flower 1**

Chain 5; join with a slip st to form ring.

Round 1 (RS): Ch 1, work 12 sc in ring, join with a slip st to first sc—12 sc.

Round 2: Ch 3 (counts as a dc), dc in same sc, work 2 dc in each sc around, join with a slip st to third ch of beg ch-3—24 dc.

Round 3: Slip st between the 2 dc; ch 1, sc in same space; ch 3, skip next 3 dc; \* sc in space between last dc skipped and the next dc, ch 3, skip next 3 dc; repeat from \* around, join with a slip st to first sc—8 sc/ch-3 spaces.

Round 4: Ch 1, sc in same sc, in next ch-3 space work [hdc, dc, 3 tr, dc, hdc] for petal, \* sc in next sc, work petal in next ch-3 space; repeat from \* around, join with a slip st to first sc—8 petals. Fasten off.

### **Flower 2**

Chain 4; join with a slip st to form ring.

Round 1 (RS): Ch 1, work 12 sc in ring, join with a slip st to first sc—12 sc.

Round 2: Ch 6 (counts as dc, ch 3), \* skip 1 sc, dc in next sc, 3 ch; repeat from \* around, join with slip st to first dc—6 dc/ch-3 spaces.

Round 3: Work [sc, 2 dc, tr, 2 dc, sc] in each ch-3 space around, join with a slip st to first sc—6 petals. Fasten off.

### **Flower 3**

Chain 4; join with a slip st to form ring.

## 16 Crochet Shawl Patterns: DIY Clothing You'll Love

Round 1: Ch 7 (counts as sc, ch 6), sc in ring, work [ch 6, sc in ring] 5 times, join with a slip st to first ch of beginning ch—6 ch-6 spaces. Work remaining rounds without joining at the end of each round.

Round 2: Slip st in each of the next 3 ch, work [ch 4, sc in next ch-6 space] 6 times—6 ch-4 spaces.

Round 3: Work [ch 4, 2 sc in next ch-4 space, sc in next sc] 6 times.

Round 4: Work [ch 4, 2 sc in next ch-4 space, sc in each of the next 2 sc, skip 1 sc] 6 times.

Round 5: Work [ch 4, 2 sc in next ch-4 space, sc in each of the next 3 sc, skip 1 sc] 6 times. Fasten off.

### Flower 4

Chain 4; join with a slip st to form ring.

Round 1: Ch 1, [sc in ring, ch 6] 8 times, join with a slip st to first sc—8 ch-6 spaces.

Round 2: In ch-6 space work [ch 4, 3 tr, ch 4, slip st), \* slip st in next ch-6 space, work [ch 4, 3 tr, ch 4, slip st) in same space; repeat from \* around—8 petals. Fasten off.

### FINISHING:

Block pieces lightly. Attach the Flowers to Shawl in groups of 4, one group on each corner area of shawl or as desired. Using yarn needle, weave in ends.

### Fringe:

Cut strands 12" long. Holding 3 strands together, fold fringe in half. Using crochet hook, \* insert hook from WS to RS into first st at upper corner, pull through loop, insert ends into loop and pull tight against edge; repeat from \*, working a fringe approx every 1/2" along the 2 sides of Shawl; leave upper edge without fringe.

## Napa Valley Shawl and Wrap

By: Jennifer Dickerson from [Fiber Flux](#)

This wrap is the perfect accessory to throw on your shoulders during the warmer months. Crocheted in cool lightweight cotton, it is great to have in a chilly restaurant or on a breezy evening.



### Napa Valley Shawl and Wrap

This image courtesy of [stitchandunwind.com](#)

#### Sizing:

12 inches wide and 48 inches long. If a wider and longer shawl is desired, simply work more rounds of each square. You could also add to the length if needed by adding more squares.

#### Materials:

- 1 Ball Bernat Cotton-ish by Vickie Howell yarn in "Cotton Gin"
- 1 Ball Bernat Cotton-ish by Vickie Howell yarn in "Jade Jersey"
- 1 Ball Bernat Cotton-ish by Vickie Howell yarn in "Coffee Filter"
- G Crochet Hook (4.25 mm)
- Tapestry Needle for seaming and weaving in ends

#### Instructions:

Granny Square (Make 4)

Note: For the color sequence shown, work three rounds of each color.

Chain 4, join into a ring with a slip stitch.

Round 1: Chain 4, work (3 dc into center of ring, chain 1) 3 times, then 2 dc into center of ring. Join to close with a slip stitch.

Round 2: To work the corner of round 2, first chain 4, then 2 dc in same space, then chain 1, then 3 dc in the same space. Chain 1, then work the next corner by working 3 dc in next space, chain 1, then 3 dc in same space, chain 1, repeat two more times to complete the round.

Round 3: Work the corner in the same manner as the previous round: chain 4, 2 dc in same space, chain 1, 3 dc in same space, chain 1. To work the sides, simply work 3 dc in the next space then chain 1...repeat until you reach a corner again.

Keep working in this manner, with two clusters in the corners and one cluster on the sides until you finish the round. Just be sure there is a ch 1 in between each grouping of 3 dc as you work each round.

Repeat round 3 until your square measures 12 inches across.

A note about making multicolored rounds:

- To begin a new round in the same color, simply slip stitch until you reach a ch1 at the corner and begin the new round.
- To begin a new round in a new/different color, cut yarn, leaving a tail, and fasten it with a slip stitch. Join the new yarn at one of the corners as shown and tie securely. Continue to the next round.

Finishing:

Weave in all ends of the squares. Seam together either by slip stitching them together or whip stitching them together with a tapestry needle.

## A Broomstick Lace Shawl

By: Kim Guzman for [Caron Yarn](#)

This free crochet pattern is made in broomstick lace which gives it a nice textured look. The floral motif border really adds a nice embellishment.



### Broomstick Lace Shawl

This image courtesy of [caron.com](#)

#### **MATERIALS:**

- Caron International's Simply Soft (100% acrylic; 6 oz/170 g, 315 yds/288 m skein): #9722 Plum Wine, 3 skeins
- One crochet hook size US H-8 (5 mm), or size to obtain gauge
- Size 35 (19 mm) knitting needle
- Yarn needle

#### **FINISHED MEASUREMENTS:**

Shawl measures approximately 61"/155 cm wide (at top edge, widest point) x 27"/68.5 cm long; Shawl Base (without motif strip) measures approximately 53"/134.5 cm (at top edge, widest point) x 20"/51 cm long

**GAUGE:** In single crochet (worked in front loops only), using US H-8 (5 mm) hook, 11 sts and 8 rows = 3"/7.5 cm; Each completed motif measures 4"/10 cm.



**STITCHES USED:**

Chain (ch) Double crochet (dc) Single crochet (sc) Treble crochet (tr)

**SPECIAL TERM** sc2tog: Single crochet 2 together – Insert hook in next stitch, yarn over and pull up a loop, (two loops on hook), insert hook in next stitch, yarn over and pull up a loop, yarn over and draw through all three loops on hook.

**NOTE:** The shawl includes rows of Broomstick (Jiffy) lace. There are two steps in working Broomstick lace. First, loops of stitches are extended and placed on a large knitting needle (the broomstick). Next the loops are worked off the needle with single crochet.

**HELPFUL:** In Broomstick lace, there are many different ways to hold the large knitting needle. Experiment with different grips and placement of the large knitting needle to find a position that works for you.

**SHAWL**

Base Ch 4.

Row 1: Sc in second ch from hook and in each remaining ch across, turn—3 sc.

Row 2 (RS): Ch 1, working in front loops only, sc in each st to last st, 2 sc in last st, turn—4 sc.

Row 3: Ch 2, turn, sc in second ch from hook; working in front loops only, sc in each sc across, turn—5 sc.

Rows 4 and 5: Work Rows 2 and 3—7 sc.

Row 6 (opening loops): Hold knitting needle close to work. Extend loop on hook slightly and place on knitting needle. \*Working in front loops only, insert hook in next sc, yarn over and draw up a loop, extending the loop slightly place loop on the knitting needle; repeat from \* to last sc; insert hook in front loop of last sc, yarn over and draw up a loop, place loop on the knitting needle, insert hook in back loop of last sc, yarn over and draw up a loop, place loop on the knitting needle, turn—8 loops on needle.

Row 7 (closing loops): Working loosely, insert hook in first loop on knitting needle, yarn over and draw up a loop; ch 1, 2 sc in same loop; remove loop from knitting needle, \*sc in next loop on knitting needle, remove loop from knitting needle; repeat from \* until all loops are removed from knitting needle, turn—9 sts.

Row 8 (RS): Ch 1, working in front loops only, sc in each st to last st, 2 sc in last st, turn—10 sc.

Row 9: Ch 2, turn, sc in second ch from hook; working in front loops only, sc in each sc across, turn—11 sc.

Rows 10–69: Repeat 4–9 ten times—71 sc.

Row 70: Ch 1, working in front loops only, sc in each st across to last 2 sts, sc2tog, turn—70 sts.

Row 71: Ch 1, working in front loops only, sc2tog, sc in each remaining st across, turn—69 sts.

Row 72: Hold knitting needle close to work. Extend loop on hook slightly and place on knitting needle. \*Working in front loops only, insert hook in next sc, yarn over and draw up a loop, extending the loop slightly place loop on the knitting needle; repeat from \* to last sc; leave last sc unworked, turn—68 loops on needle.

Row 73 (closing loops): Working loosely, insert hook into first 2 loops on knitting needle at the same time, yarn over and draw up a loop; ch 1, inserting hook into first 2 loops at the same time, work 1 sc; remove loops from knitting needle, \*sc in next loop on knitting needle, remove loop from knitting needle; repeat from \* until all loops are removed from knitting needle, turn—67 sts.

Row 74: Ch 1, working in front loops only, sc in each st across to last 2 sc, sc2tog, turn—66 sts.

Row 75: Ch 1, working in front loops only, sc2tog, sc in each remaining st across, turn—65 sts.

Rows 76 and 77: Repeat Rows 74 and 75—63 sts.

Rows 78–137: Repeat Rows 72–77 ten times—3 sts.

Row 138: Ch 1, working in front loops only, sc in first st, sc2tog—1 st. Fasten off.

### **Edging**

With WS facing and point facing upwards, join yarn with slip st in lower side corner.

Row 1: Ch 1, working along lower edge of shawl base, work 133 sc evenly spaced to point of shawl, 2 sc in point, work 133 sc evenly spaced to opposite corner of shawl base—268 sc. Fasten off.

### **MOTIF (make 19)**

Ch 4; join with slip st in first ch to form a ring.

Round 1: Ch 1, work 7 sc in ring; join with slip st in first sc.

Round 2: Ch 8, slip st in same st as join, \*(slip st, ch 8, slip st) in next sc; repeat from \* 6 more times; (sl st, ch 4, tr) in first sc (at base of beginning ch-8).

Round 3: Ch 1, sc in space formed by last st of previous round, ch 2, (2 dc, ch 2, 2 dc) in next ch-8 space, ch 2, \*sc in next ch-8 sp, ch 2, (2 dc, ch 2, 2 dc) in next ch-8 sp, ch 2; repeat from \* 2 more times; join with slip st in first sc.

Round 4: Ch 1, sc in same st as join, 2 sc in next ch-2 sp, sc in next 2 dc, (2 sc, ch 2, 2 sc) in next ch-2 sp, sc in next 2 dc, 2 sc in next ch-2 sp, \*sc in next sc, 2 sc in next ch-2 sp, sc in next 2 dc, (2 sc, ch 2, 2 sc) in next ch-2 sp, sc in next 2 dc, 2 sc in next ch-2 sp; repeat from \* 2 more times; join with slip st in first sc. Fasten off. Assemble Motif Strip Arrange motifs according to assembly diagram. Using yarn needle, whipstitch motifs together.

## FINISHING

Join Base and Motif Strip With WS facing, join yarn with slip st in inner corner of first motif of strip.

Row 1: Hold piece to work along inner v-edge of motif strip; ch 1, working along inner edge of motif strip, work 268 sc evenly spaced across inner edge to opposite corner of motif strip, turn.

Row 2 (opening loops): Hold knitting needle close to work. Extend loop on hook slightly and place on knitting needle. \*Working in front loops only, insert hook in next sc, yarn over and draw up a loop, extending the loop slightly place loop on the knitting needle; repeat from \* across, turn—268 loops on needle.

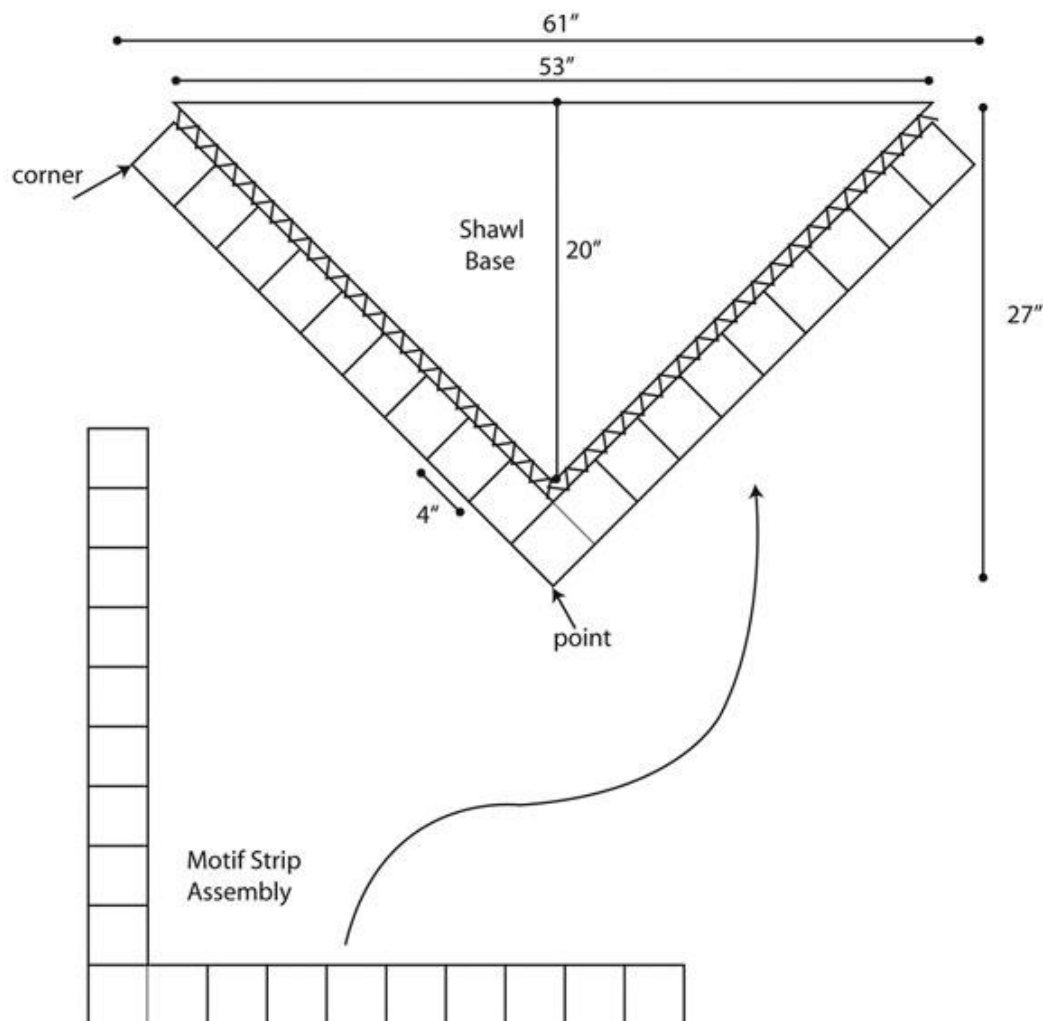
Row 3 (closing loops): Working loosely, insert hook in first loop on knitting needle, yarn over and draw up a loop; ch 1, sc in same loop; remove loop from knitting needle, \*sc in next loop on knitting needle, remove loop from knitting needle; repeat from \* until all loops are removed from knitting needle, turn—268 sts. Fasten off. Align sts of Row 3 with sts of shawl edging. Using yarn needle, whipstitch shawl base and motif strip together, sewing through corresponding sts.

## Border

Note: The shawl has two side corners and one point. The corners are located at each side and correspond to the outer corners of the first and last motifs of the motif strip. The point is located at the lowest point of the shawl and corresponds with the lowest point of the center motif of the motif strip. With RS facing, join yarn with slip st in any st along edge of shawl.

Round 1: Ch 1, work sc evenly spaced around entire shawl, working 3 sc in each corner and point of shawl; join with slip st in first st.

Round 2: Ch 1, sc in each sc around, working 3 sc in each corner and point of shawl; join with slip st in first st. Fasten off. Using yarn needle, weave in ends.



## Perfect Red Shawl

By: Marianne Forrestal from [Red Heart Yarn](#)

This shawl is beautiful with its bright bold red color. Make this easy crochet pattern for yourself or make it for a friend. Red Heart Soft yarn is used. This festive red shawl will keep you warm and stylish at the same time. The Perfect Red Shawl is a great crochet wearable to wear on Valentine's Day or Christmas.



Perfect Red Shawl

This image courtesy of redheart.com

### MATERIALS:

- RED HEART® "Soft Yarn™": 3 balls 4608 Wine
- Crochet Hook: 5.5 mm [US H-8]
- Yarn needle

**GAUGE:** One repeat = 3"; 8 rows = 3" in pattern. CHECK YOUR GAUGE. Use any size hook to obtain the gauge.

**SHAWL** Ch 190.

Row 1 (Wrong Side): Sc in 2nd ch from hook, [ch 3, skip next 2 ch, sc in next 3 ch] 37 times, ch 3, skip next 2 ch, sc in last ch; turn.

Row 2: Ch 1, sc in first sc, [ch 3, dc in center sc of next 3 sc, ch 3, sc in next ch-3 space, sc in next 3 sc, sc in next ch-3 space] 18 times, ch 3, dc in center sc of next 3 sc, ch 3, sc in last sc; turn.

Row 3: Ch 1, sc in first sc, [ch 3, sc in next ch-3 space, sc in next dc, sc in next ch-3 space, ch 3, skip next sc, sc in next 3 sc] 18 times, ch 3, sc in next ch-3 space, sc in next dc, sc in next ch-3 space, ch 3, sc in last sc; turn.

Row 4: Ch 6 (counts as dc, ch 3), [sc in next ch-3 space, sc in next 3 sc, sc in next ch-3 space, ch 3, skip next sc, dc in next sc, ch 3] 18 times, sc in next ch-3 space, sc in next 3 sc, sc in next ch-3 space, ch 3, dc in last sc; turn.

Row 5: Ch 1, sc in first dc, [ch 3, skip next sc, sc in next 3 sc, ch 3, sc in next ch-3 space, sc in next dc, sc in next ch-3 space] 18 times, ch 3, skip next sc, sc in next 3 sc, ch 3, sc in 3rd ch of ch-6; turn.

Rows 6-43: Repeat Rows 2-5 nine more times, then repeat Rows 2 and 3 once more. Do not fasten off.

### **Border**

Rnd 1: Ch 1, sc in each sc and 2 sc in each ch-3 space across long edge to last sc, 3 sc in last sc; \*\* working along short edge: [sc in next 3 sc row ends, 2 sc in next dc row end] 10 times, sc in next 3 sc row ends (53 sc) \*\*; working in opposite side of starting ch: 3 sc in first ch, \* 2 sc in next ch-space, sc in next 3 ch; repeat from \* to last ch; 3 sc in last ch; repeat from \*\* to \*\*; 2 sc in same st as first sc of round; TURN.

### **Short Edge Trim**

Row 1: Ch 1, sc in 57 sc across short side; turn.

Row 2: Ch 1, sc in first sc, [skip next 3 sc, 7 dc in next sc, skip next 3 sc, sc in next sc] 7 times; turn.

Row 3: Ch 4 (counts as dc, ch 1), dc in first sc, \* ch 3, skip next 3 dc, sc in next dc, ch 3, (dc, ch 1, dc) all in next sc; repeat from \* across; turn.

Row 4: Ch 1, sc in first ch-1 space, \* 9 dc in next sc, sc in next ch-1 space; repeat from \* across; turn.

Row 5: Ch 4, dc in first sc, \* ch 4, skip next 4 dc, sc in next dc, ch 4, (dc, ch 1, dc) all in next sc; repeat from \* across; turn.

Row 6: Ch 1, sc in first ch-1 space, \* 11 dc in next sc, sc in next ch-1 space; repeat from \* across; turn.

## 16 Crochet Shawl Patterns: DIY Clothing You'll Love

Row 7: Ch 1, sc in first sc, [ch 4, skip next st, sc in next st] 42 times. Fasten off. Weave in ends.  
Opposite

### **Short Edge Trim**

Row 1: With wrong side facing, join yarn in center sc of corner 3 sc; ch 1, sc in same sc as joining and next 56 sc; turn – 57 sc.

Rows 2-7: Repeat Rows 2-7 of short edge trim.

## A Pineapple Lace Shawl

By: Karen Drouin for [Caron Yarn](#)

Using this free crochet pattern you can crochet yourself an elegant-looking shawl inspired by a vintage doily. Eco-friendly yarn is the way to go.



Pineapple Lace Shawl

This image courtesy of [caron.com](#)

### Materials:

- Caron International's Simply Soft Eco (80% Acrylic, 20% NatureSpun™ Polyester): 10 oz #0034 Black
- One size US J-10 (6 mm) crochet hook, or size to obtain gauge.
- Yarn needle

**Finished Size:** approximately 48"/122 cm wide x 24"/61 cm long Gauge: In pattern stitch, 23 sts and 3 rows = 4"/10 cm. Exact gauge is not critical for this project.

**Stitches:** Chain (ch), single crochet (sc), slip stitch (slip st), treble crochet (tr)



**Special Terms:** Beg-trCl: Beginning treble cluster—Ch 4, yarn over twice, insert hook in indicated stitch and draw up a loop, [yarn over and draw through 2 loops on hook] twice (2 loops on hook); yarn over twice, insert hook in same stitch and draw up a loop, [yarn over and draw through 2 loops on hook] twice (3 loops on hook); yarn over and draw through all 3 loops on hook. trCl: Treble cluster—Yarn over twice, insert hook in indicated stitch and draw up a loop, [yarn over and draw through 2 loops on hook] twice (2 loops on hook); \*yarn over twice, insert hook in same stitch and draw up a loop, [yarn over and draw through 2 loops on hook] twice; repeat from \* once more; yarn over and draw through all 4 loops on hook. Beg-trCl shell: Beginning treble cluster shell—(Beg-trCl, ch 3, trCl) in indicated stitch. trCl shell: Treble cluster shell—(trCl, ch 3, trCl) in indicated stitch. trCl shell-inc: Treble cluster shell increase—([trCl, ch 3] twice, trCl) in indicated stitch. picot: Ch 6, sl st in top of last st made.

**Instructions:**

Ch 10; taking care not to twist ch, join with slip st in first ch to form a ring.

Row 1: Ch 4 (counts as first tr), work 22 tr in ring, turn—23 tr.

Row 2: Beg-trCl in first tr, \*ch 3, skip next tr, trCl in next tr; repeat from \* across, working last trCl in top of turning ch, turn—12 clusters.

Row 3: Beg-trCl in first trCl, \*ch 2, tr in next ch-3 space, ch 2, trCl in next trCl; repeat from \* across, turn—12 clusters and 11 tr.

Row 4: Beg-trCl in first trCl, \*ch 3, tr in next tr, ch 3, trCl in next trCl; repeat from \* across, turn.

Row 5: Beg-trCl in first trCl, \*ch 4, tr in next tr, ch 4, trCl in next trCl; repeat from \* across, turn.

Row 6: Beg-trCl in first trCl, \*ch 5, tr in next tr, ch 5, trCl in next trCl; repeat from \* across, turn.

Row 7: Beg-trCl shell in first trCl, \*ch 4, tr in next tr, ch 4, trCl shell in next trCl; repeat from \* across, turn—12 shells and 11 tr.

Row 8: Beg-trCl in first trCl, ch 5, trCl in next trCl, \*ch 3, tr in next tr, ch 3, trCl in next trCl, ch 5, trCl in next trCl; repeat from \* across, turn—24 clusters and 11 tr.

Row 9: Beg-trCl in first trCl, ch 9, trCl in next trCl, \*ch 3, tr in next tr, ch 3, trCl in next trCl, ch 9, trCl in next trCl; repeat from \* across, turn.

Row 10: Beg-trCl in first trCl, ch 5, sc in 5th ch of next ch-9 space, picot, ch 5, trCl in next trCl, \*picot, trCl in next trCl, ch 5, sc in 5th ch of next ch-9 space, picot, ch 5, trCl in next trCl; repeat from \* across, turn—24 clusters.

Row 11: Beg-trCl in first trCl, ch 5, 6 tr in next picot, ch 5, \*trCl shell in next picot, ch 5, 6 tr in next picot, ch 5; repeat from \* across to last trCl, trCl in last trCl, turn—11 shells, 2 clusters and 12 6-tr groups.

Row 12: Beg-trCl in first trCl, ch 5, sc in next tr, [ch 6, sc in next tr] 5 times (beginning of pineapple), ch 5, \*trCl shell in ch-3 space of next trCl shell, ch 5, sc in next tr, [ch 6, sc in next tr] 5 times, ch 5; repeat from \* across to last trCl, trCl in last trCl, turn—11 shells, 2 clusters, and 12 pineapple beginnings.

Row 13: Beg-trCl in first trCl, ch 6, [sc in next ch-6 space, ch 6] 5 times, \*trCl shell in ch-3 space of next trCl shell, ch 6, [sc in next ch-6 space, ch 6] 5 times; repeat from \* across to last trCl, trCl in last trCl, turn.

Row 14: Beg-trCl in first trCl, ch 6, skip next ch-6 space, [sc in next ch-6 space of pineapple, ch 6] 4 times, \*trCl shell in ch-3 space of next trCl shell, ch 6, skip next ch-6 space, [sc in next ch-6 space of pineapple, ch 6] 4 times; repeat from \* across to last trCl, trCl in last trCl, turn.

Row 15 (trCl shell increase row): Beg-trCl shell in first trCl, ch 6, skip next ch-6 space, [sc in next ch-6 space of pineapple, ch 6] 3 times, \*trCl shell-inc in ch-3 space of next trCl shell, ch 6, skip next ch-6 space, [sc in next ch-6 space of pineapple, ch 6] 3 times; repeat from \* across to last trCl, trCl shell in last trCl, turn—11 shell increases, 2 shells, and 12 pineapples.

Row 16: Beg-trCl in first trCl, ch 3, sc in next ch-3 space, ch 3, trCl in next trCl, ch 6, skip next ch-6 space, [sc in next ch-6 space of pineapple, ch 6] twice, \*[trCl in next trCl, ch 3, sc in next ch-3 space, ch 3] twice, trCl in next trCl, ch 6, skip next ch-6 space, [sc in next ch-6 space of pineapple, ch 6] twice; repeat from \* across to last shell, trCl in next trCl, ch 3, sc in next ch-3 space, ch 3, trCl in last trCl, turn—37 clusters, and 12 pineapples.

Row 17: Beg-trCl in first trCl, [ch 3, sc in next ch-3 space] twice, ch 3, trCl in next trCl, ch 3, sc in next ch-6 space, ch 3, (sc, ch 3, sc) in next ch-6 space (pineapple point), ch 3, sc in next ch-6 space, ch 3, \*\*trCl in next trCl, \*[ch 3, sc in next ch-3 space] twice, ch 3, trCl in next trCl; repeat from \* once more, ch 3, sc in next ch-6 space, ch 3, (sc, ch 3, sc) in next ch-6 space (pineapple point), ch 3, sc in next ch-6 space, ch 3; repeat from \*\* to last 2 trCl, trCl in next trCl, [ch 3, sc in next ch-3 space] twice, ch 3, trCl in last trCl, turn.

Row 18: Ch 5, sc in next ch-space, \*ch 3, sc in next ch-space; repeat from \* across skipping all trCl to last trCl, ch 3, slip st in last trCl, turn. Do not fasten off.

## Edging

Note: Work edging around entire shawl as follows:

Row 1: Ch 5, sc in next ch-3 space, \*ch 3, sc in next ch-space; repeat from \* across, ch 3, sc in same (last) ch-space again (for corner); pivot to work along top edge, \*\*ch 3, sc in end of next row; repeat from \*\* across working (sc, ch 3, sc) in center of beginning ring; ch 3, join with slip st in 2nd ch of beginning ch-5, do not turn.

Row 2: Beg-trCl in same st as join; \*ch 3, slip st in next ch-3 space, ch 3, trCl in next ch-3 space; repeat from \* across to opposite top corner, ending with ch 3, sl st in corner ch-space; working along top edge, work 3 sc in each ch-space across; join with slip st in Beg-trCl. Fasten off.

## Finishing

Using yarn needle, weave in ends. If desired, block lightly.

## An Easy Comfort Shawl

By: [Lion Brand Yarn](#)

This shawl is so chunky and comfortable looking you can wear it as a scarf too or wrap yourself up in it for a nice long nap. A size K hook is called for.



An Easy Comfort Shawl

This image courtesy of lionbrand.com

### Materials:

- 1 skein Fishermen's Wool Yarn in Oatmeal
- K (10.5) crochet hook
- Large-Eye Blunt Needles

**Gauge:** 3 V-sts + 5 rows = 4 in. (10 cm) in pattern. BE SURE TO CHECK YOUR GAUGE. When you match the gauge in a pattern, your project will be the size specified in the pattern and the materials specified in the pattern will be sufficient. If it takes you fewer stitches and rows to make a 4 in. [10 cm] square, try using a smaller size hook or needles; if more stitches and rows, try a larger size hook or needles.

**Instructions:**

Ch 51.

Row 1: (Dc, ch 2, dc) in 6th ch from hook (V-st made), \*sk next 2 ch, (dc, ch 2, dc) in next ch; rep from \* across to last 3 ch, sk next 2 ch, dc in last ch – 15 V-sts at the end of this row.

Row 2: Ch 3, turn, (dc, ch 2, dc) in each ch-2 sp across, dc in top of turning ch. Rep last row until almost all yarn is used, leaving at least a 6 in. (15 cm) tail.

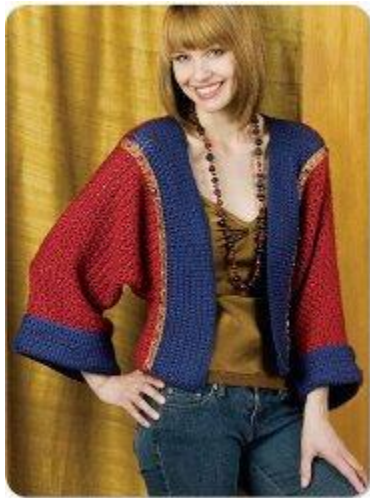
Fasten off.

Weave in ends.

## Kimono Shrug

By: Tammy Hildebrand with Cari Clement for [Caron](#)

Enjoy a peaceful Japanese afternoon wearing this stylish Kimono Shrug. The free crochet pattern includes directions on how to make this shrug in four different sizes. It is intended to be a loose fitting garment and the pattern is designed to be worn as shown in photo. Play around with different color combinations to customize the look of this cardigan.



Kimono Shrug

This image courtesy of [caron.com](#)

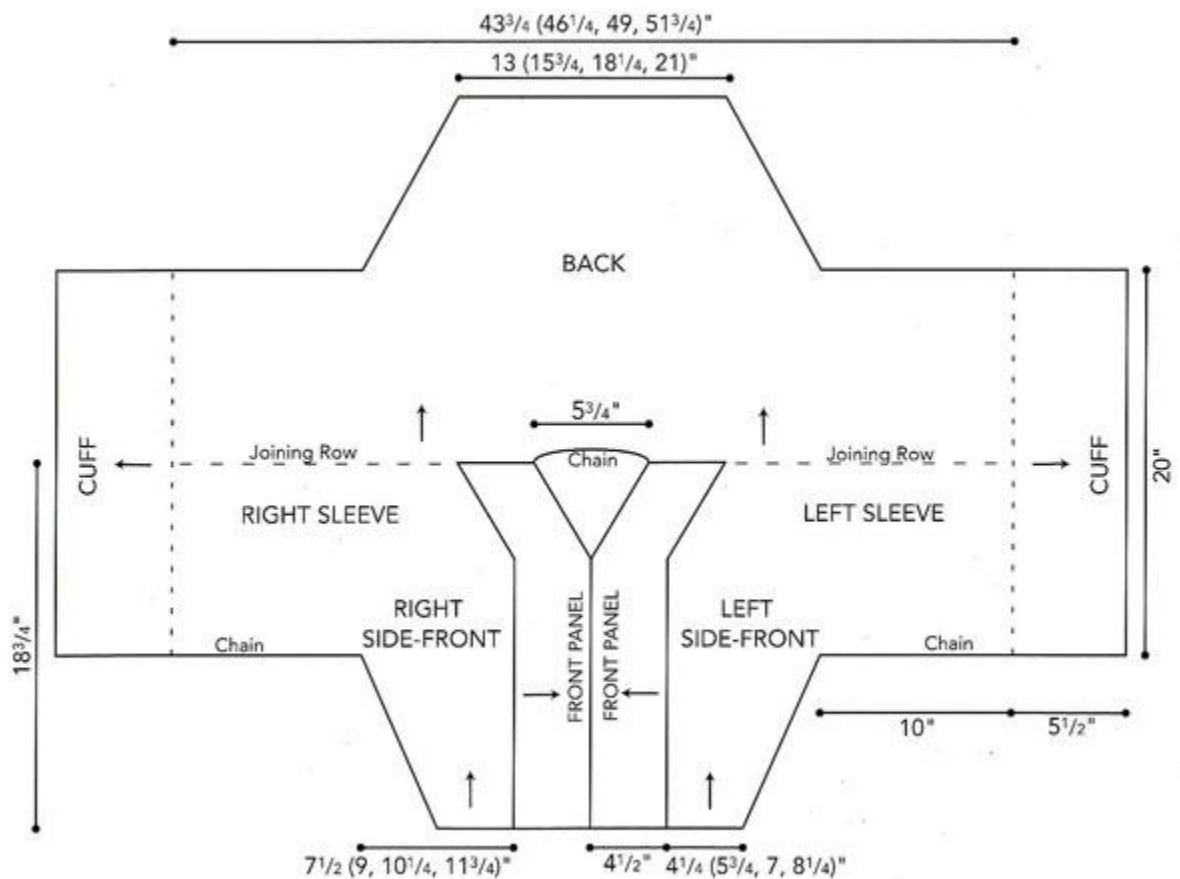
**SIZES** Small (Medium, Large, Extra-Large)

**FINISHED MEASUREMENTS** Bust 36 (40, 44, 48)"/91.5 (101.5, 112, 122) cm Length 18 1/2"/46.5 cm, all sizes

Note: Shrug is loose fitting and designed to be worn as shown in photo. Bust measurements are suggested sizes for a standard fitting garment; choose accordingly. Due to shaping, garment is wider than measurements indicate on schematic.

**MATERIALS:**

- Caron International's Simply Soft (100% acrylic; 6 oz/170 g, 315 yds/288 m skein): #9730 Autumn Red (MC), 3 (3, 4, 4) skeins #9711 Dk. Country Blue (CC), 2 (2, 2, 2) skeins
- One each size US G-6 and J-10 (4 and 6 mm), or size to obtain gauge
- Yarn needle
- 1 1/4 yards/118 cm flat braid trim, 3/4"/1.9 cm wide, in color desired (shown in red, with gold metallic threads)
- 28 textured brass beads, 4 mm x 6 mm 14 bugle beads, 11 mm long, dark red 14 glass beads, in various sizes, no smaller than 6 mm, no larger than 11 mm
- Dark red Tapestry or beading needle (thin enough to fit through beads)
- Beading or quilting thread to match braid
- Sewing needle and thread to match garment
- Straight pins or small safety pins



**GAUGE** In Stitch Pattern, 12 sc and 12 rows = 4"/10 cm, using larger hook and MC; in single crochet, 13 sc and 16 rows = 4"/10 cm, using smaller hook and CC

**CROCHET STITCHES USED** ch: chain sc: single crochet slip st: slip stitch

**Stitch Pattern (Multiple of 2 sc + 1)**

Row 1 (RS): Sc in second ch from hook and each ch across, turn.

Row 2: Ch 1, sc in first st, \* ch 1, skip next st, sc in next st; repeat from \* across, turn.

Row 3: Ch 1, sc in first st and in each ch-1 space and sc across, turn. Repeat Rows 2 and 3 for Stitch pattern.

**NOTES**

1. Shrug is worked from lower edge of Front, across shoulders to lower edge of Back.
2. Side Front/Sleeve is worked to shoulder; CC panels are then worked on each Front.
3. Back/Sleeves are joined at shoulders to Side Front/Sleeve and CC Panels, then worked down.
4. Cuffs are worked down from lower edge of Sleeves.

**LEFT SIDE FRONT/SLEEVE**

Using larger hook and MC, chain 14 (18, 22, 26).

Row 1 (RS): Work Row 1 of Stitch pattern-13 (17, 21, 25) sc.

Row 2: Work Row 2 of Stitch pattern-7 (9, 11, 13) sc; 6 (8, 10, 12) ch-1 spaces.

Row 3: Work Row 3 of Stitch pattern-13 (17, 21, 25) sc.

Rows 4 - 16: Work even in pattern, repeating Rows 2 and 3, end with (WS) Row 2.

**Shape Side and Underarm**

Row 17 (RS): At side edge, ch 1, work [2 sc in first st (increase)], beginning at \*, work in pattern to end, turn-14 (18, 22, 26) sc.

Row 18: Work in pattern across to last st, [ch 1, sc in last st, (increase)], turn-8 (10, 12, 14) sc; 7 (9, 11, 13) ch-1 spaces.

Rows 19 - 25: Work in pattern, increasing 1 st at side edge every row, turn-22 (26, 30, 34) sc.



Row 26: Work in pattern across to last st, ch 1, sc in last st; do NOT turn-12 (14, 16, 18) sc; 11 (13, 15, 17) ch-1 spaces.

### **Sleeve**

Chain 31, turn.

Row 27 (RS): Sc in second ch from hook and in next 29 ch; sc in next st and in each sc and ch-1 space to end-53 (57, 61, 65) sc.

Rows 28 - 42: Work even in pattern, end with a WS row.

### **Shape Neck**

Row 43: Work in pattern across to last st, turn, [leaving last st at neck edge unworked (decrease)]-52 (56, 60, 64) sc.

Row 44: Slip st in next st (decrease), ch 1, sc in same st, work in pattern to end, turn-26 (28, 30, 32) sc; 25 (27, 29, 31) ch-1 spaces remain.

Rows 45 - 56: Work in pattern, decreasing 1 st at neck edge every row-20 (22, 24, 26) sc; 19 (21, 23, 25) ch-1 spaces remain at shoulder edge. Fasten off.

**Front Panel** With RS facing, using smaller hook and CC, join yarn with a sc in first row end of neck (at shoulder edge).

Row 1: Sc in each row end along Front edge to lower edge, turn-56 sc.

Row 2: Ch 1, sc in each st across, turn.

Rows 3 - 18: Work even in sc, repeating Row 2. Fasten off

**RIGHT SIDE FRONT/SLEEVE** Using larger hook and MC, chain 14 (18, 22, 26). Work as for left Front for 16 rows, end with (WS) Row 2.

### **Shape Side and Underarm**

Row 17 (RS): Work in pattern across to last st, work [2 sc in last st (increase)], turn-14 (18, 22, 26) sc.

Row 18: Ch 1, sc in first st, [ch 1, sc in next st (increase)], work in pattern to end-8 (10, 12, 14) sc; 7 (9, 11, 13) ch-1 spaces.

Rows 19 - 26: Work in pattern, increasing 1 st at side edge every row-12 (14, 16, 18) sc; 11 (13, 15, 17) ch-1 spaces. At front edge, drop yarn, do NOT fasten off.

**Sleeve** With RS facing, join another strand of MC with a slip st in first st of Row 26 (side edge), chain 30 Fasten off; return to front edge, pick up dropped strand of yarn.

Row 27 (RS): Work in pattern across to chain, sc in each ch to end, turn-53 (57, 61, 65) sc.

Rows 28 - 42: Work even in pattern, end with a WS row.

### Shape Neck

Row 43: Slip st in next ch-1 space (decrease), ch 1, sc in same space, work in pattern to end, turn-52 (56, 60, 64) sc.

Row 44: Work in pattern across to last st, turn, leaving last st unworked (decrease)-26 (28, 30, 32) sc; 25 (27, 29, 31) ch-1 spaces.

Rows 45 - 56: Work in pattern, decreasing 1 st every row-20 (22, 24, 26) sc; 19 (21, 23, 25) ch-1 spaces at shoulder edge. Fasten off.

**Front Panel** With RS facing, using smaller hook and CC, join yarn with a sc in first row end at lower edge. Work as for left Front.

**BACK** Joining Row-With RS facing, using larger hook and MC, join yarn with a slip st in first sc of left Sleeve; ch 1, work in pattern (sc in each sc and ch-1 space) across to left Front Panel; working in row ends, sc in each row end across; chain 17 for Back neck; working in row ends, sc in each row end across right Front Panel; work in pattern to end, turn-57 (61, 65, 69) sc each side of chain.

Row 2: Work in pattern across to chain; sc in each ch across Back neck; work in pattern to end, turn-29 (31, 33, 35) sc; 28 (30, 32, 34) ch-1 spaces each side, 17 sc at center Back.

Row 3: Work in pattern (sc in each sc and ch-1 space) across, turn-131 (139, 147, 155) sc.

Row 4: Work in pattern across all sts-66 (70, 74, 78) sc; 65 (69, 73, 77) ch-1 spaces.

Rows 5 - 29: Work even in pattern. Fasten off. Sleeves Row 30 (WS): Skip first 30 sts (Sleeve); join MC with a sc in next st; work in pattern across to last 30 sts, turn, leaving last 30 sts unworked for Sleeve-36 (40, 44, 48) sc, 35 (39, 43, 47) ch-1 spaces remain.

### Shape Side and Underarm

Row 31: Slip st in next ch-1 space, slip st in next st (2 sts decreased); ch 1, sc in same st, work in pattern across to last 2 sts, turn, leaving remaining sts unworked (2 sts decreased)-67 (75, 83, 91) sc remain.

Row 32: Slip st in next 2 sts (2 sts decreased), ch 1, sc in same st, work in pattern across to last 2 sts, turn, leaving remaining sts unworked (2 sts decreased-32 (36, 40, 44) sc, 31 (35, 39, 43) ch-1 spaces remain.

Rows 33 - 38: Continuing in pattern, decrease 2 sts each side every row 6 times, working as for Rows 31 and 32—20 (24, 28, 32) sc, 19 (23, 27, 31) ch-1 spaces remain.

Rows 39: Work even in pattern 39 (47, 55, 63) sc. Rows 40 - 56: Work even in pattern. Fasten off.

## FINISHING

Using yarn needle, weave in all ends. Assembly With WS facing each other, sew side and Sleeve seams, matching shaping.

### Cuffs

Note: Work in joined rows, turning at the end of each row.

Row 1: Using smaller hook and CC, join yarn with a sc in row end at seam; sc in each row around, join with a slip st in beginning sc, turn.

Row 2: Ch 1, sc in each sc around, join with a slip st in beginning sc, turn.

Rows 3 - 22: Work even in sc, repeating Row 2. Fasten off.

**Lower Edge** With WS facing, using smaller hook and CC, working in row ends of lower edge of Front Panel, join yarn with a sc in corner row of right Front Panel; sc in each row end across to Side-Front; change to MC, working in remaining loops of foundation ch, sc in each st across Front; sc in each st across Back; working as for Right Side-Front, work across Left Side-Front; change to CC, work across row ends of Left Front Panel to end. Fasten off.

## **EMBELLISHING**

1. Separate the beads into 3 groups: bugle beads, red glass beads, and brass beads.
2. Measure distance of contrast band from shoulder to lower edge and cut trim accordingly, adding 1/2"/1.3 cm for turn- under.
3. Fold in 1/4"/.6 cm hem at lower edge of trim and stitch.
4. Mark the trim with pins for bead placement.
5. Thread sewing needle with matching thread and bring to RS. Sew on beads as follows: brass bead, bugle bead, glass bead. Repeat in that order for the length of the trim.
6. Pin trim to Kimono over the seam and stitch in place with sewing thread.

## Beautiful Bridal Shawl

By: Kimberly K. McAlindin for [Red Heart Yarn](#)

Add a homemade touch to your special day with this Beautiful Bridal Shawl. Use Aunt Lydia's Crochet Thread from Red Heart to complete this free crochet shawl pattern. It can be made in ivory or white for the bride or in any color for a bridesmaid or maid-of-honor. Bamboo thread gives this crochet design beautiful drape and a nice silky sheen.



### Beautiful Bridal Shawl

This image courtesy of [redheart.com](#)

#### **MATERIALS:**

- AUNT LYDIA'S® Iced Bamboo™: 8 balls 3001 Icycle Susan Bates®
- Crochet Hook: 3.75mm [US F-5] (for shawl) 3.25mm [US D-3] (for flower motifs)
- Yarn needle

#### **SIZE:**

Shawl measures 15" (38 cm) wide (from back neck to lower edge) and 86" (218.5 cm) long (across lower edge)

#### **GAUGE/TENSION:**

One flower motif measures 3¾" (9.5 cm) from petal tip to petal tip. Gauge is not critical for this design.

**NOTES:**

1. Flower motifs are worked in joined rounds with right side facing at all times. Motifs are joined using a "join-as-you-go" technique into a long strip.
2. The body of the shawl is worked beginning across one long edge of the flower motif strip.

**FIRST MOTIF**

With smaller hook, ch 5; join with slip st in first ch to form a ring.

Round 1 (right side): Ch 7 (counts as dc, ch 4), dc in ring, [ch 4, dc in ring] 5 times, ch 4; join with slip st in 3rd ch of beginning ch—7 dc and 7 ch-4 spaces.

Round 2: \*(Slip st, ch 5, 7 dtr) in next ch-4 space (petal made), ch 1, work 3 slip sts evenly spaced down last dtr made; repeat from \* around; join with slip st in same ch- space as first petal—7 petals.

**NEXT MOTIF (make and join 22 more)**

Work same as first motif through Round 1—7 dc and 7 ch-4 spaces. Current motif is now completed and joined to the previous motif when working the last two petals. Arrange and join motifs so that there are four petals of each motif across one long edge (lower edge) of strip and three petals of motif across other long edge of strip (top edge).

Round 2 (joining round): \*(Slip st, ch 5, 7 dtr) in next ch-4 space (petal made), ch 1, work 3 slip sts evenly spaced down last dtr made; repeat from \* 4 more times to make 5 petals; hold current motif and previous motif with wrong sides together and sts matching, following sts are worked into the current motif except when sts of the previous motif are explicitly indicated: (slip st, ch 5, 7 dtr) in next ch-4 space, ch 1, slip st in corresponding dtr of previous motif, ch 1, work 3 slip sts evenly spaced down last dtr made, (slip st, ch 5, slip st in next dtr of previous motif, 7 dtr) in next ch-4 space, ch 1, work 3 slip sts evenly spaced down last dtr made; join with slip st in same ch-space as first petal.

**SHAWL:**

Row 1: With larger hook and right side of flower motif strip facing, join yarn with slip st in top of beginning ch-5 of first petal of top edge.

Note: The first petal of the top edge is the first of the three petals at the top of the first motif. The third of the top three petal of the first motif is joined to the 2nd motif. Ch 7, slip st in last dtr of same petal, ch 7, slip st in top of beginning ch-5 of next petal, ch 7, slip st in last dtr of same petal, ch 7, slip st in top of beginning ch-5 of next petal (third petal at top edge of first motif), \*ch 7, slip st in last dtr of first petal of next motif, ch 7, slip st in top of beginning ch-5 of next petal, ch 7, slip st in last dtr of same petal, ch 7, slip st in top of beginning ch-5 of next petal; repeat from \* across top edge, ch 7, slip st in last dtr of last petal of top edge, turn.

Row 2: Ch 7 (counts as tr, ch 3), slip st in first ch-space, \*ch 7, slip st in next ch-space; repeat from \* across, ch 3, tr in last slip st, turn.

Row 3: Ch 5, skip first ch-3 space, (dtr, ch 3, dtr) in each ch-space across to last ch-space, dtr in last ch-space, turn.

Row 4: Ch 5, (dtr, ch 3, dtr) in each ch-space across, dtr in top of turning ch,, turn.

Rows 5–7: Ch 5, (dtr, ch 2, dtr) in each ch space across, dtr in top of turning ch, turn.

Rows 8–11: Ch 4, (tr, ch 2, tr) in each ch space across, tr in top of turning ch, turn.

Rows 12–14: Ch 4, (tr, ch 1, tr) in each ch space across, tr in top of turning ch, turn.

Rows 15 and 16: Ch 3 (counts as dc), (dc, ch 1, dc) in each ch-space across, dc in top of turning ch, turn.

Row 17: Ch 1, sc in each dc across skipping all ch-1 spaces. Fasten off.

## **FINISHING**

Weave in ends.

## Purple Sport Shawl

By: [Bernat](#)

This Purple Sport Shawl is an elegant shawl you can wear to accentuate any outfit. You can work it in solids or ombres with single crochet and the shell stitch. Learn how to crochet this pretty shawl right now; it's an easy crochet pattern to follow!



Purple Sport Shawl

This image courtesy of [bernat.com](#)

### Materials:

- (Solids:85 g/3 oz) 2 balls OR (Ombres:70 g/2.4 oz) 3 balls
- Size 4 mm (U.S. G or 6) crochet hook or size needed to obtain gauge.

### GAUGE:

4 shells and 6 rows = 4 ins [10 cm].



## INSTRUCTIONS

Ch 238 loosely.

Foundation row: (RS). 1 sc in 2nd ch from hook. Miss next 3 ch. [(1 dc. Ch 1) 3 times. 1 dc] in next ch – Shell made. \*Miss next 5 ch. Shell in next sc. Rep from \* to last 4 ch. Miss next 3 ch. 1 sc in last ch. Turn. 39 Shells.

1st row: Ch 5 (counts as dtr). 1 sc in center ch-1 sp of first Shell. \*Ch 5. 1 sc in center ch-1 sp of next Shell. Rep from \* to last sc. 1 dtr in last sc. Turn.

2nd row: Ch 1. 1 sc in first sc. \*Shell in 3rd ch of ch 5. Rep from \* to last sc. 1 sc in last sc. Rep last 2 rows until 1 Shell rem.

Fasten off.

## Sweet November Scarf and Shawl

By: April Folts for [April Draven Designs](#)

This scarf/shawl pattern was inspired by the movie *Sweet November*. It's a fabulous pattern that can be worn as a scarf or a shawl. Double crochet is used and you can choose to add the fringe or not.



Sweet November Scarf and Shawl

This image courtesy of [aprilraven.blogspot.com](#)

### Materials:

- J hook
- Yarn: I used a little over 6 oz of Caron Simply Soft 100% acrylic Worsted medium 4ply Autumn Red

### Abbreviations:

Rnd: round

ch: chain

dc: double crochet

ch 4, 1 dc in 1st ch, ch 3, turn (This forms beginning loop)

## 16 Crochet Shawl Patterns: DIY Clothing You'll Love

*When I say loop what I mean is the space that is created. This pattern is worked in the space created not the stitches. Look at the picture above I have provided and you can see what I mean. You create a circle and then do the stitch in the circle. I really don't know how to explain it better.*

1 dc in loop, ch 1, 1 dc, ch 3, turn

(1 dc, ch 1, 1 dc)(in same loop) ch 1 (1 dc, ch 1, 1 dc)(in same loop) ch 3, turn

(1 dc, ch 1, 1 dc)(in same loop) (ch 1, 1 dc)(in next loop) (ch 1, 1 dc)(in next loop)(1 dc, ch 1, 1 dc)(in same loop) ch 3, turn

...continue pattern (1 dc, ch 1, 1 dc) in end loops so you are increasing 2 stitches every row  
\*you should end up with a big triangle\*

I had a total of 44 rows when I was done. (I think the scarf she has was a little longer but I have the movie on VHS and can't take a screen shot so I had to improvise LOL VHS hehe)

Fringe: I wrapped the yarn around a DVD case. I tied 2 pieces held together in each loop on the sides.

## Endless Summer Shawl

By: Tamara Kelly from [Moogly](#)

The fiery colors of this Endless Summer Shawl will definitely remind you of a spectacular summer sunset. Make this free crochet shawl pattern if you want to add a pop of color to your wardrobe. Use fingering yarn to complete this lightweight crocheted shawl for summer. The unique trapezoid shape of this crochet design allows this piece to be draped loosely around the shoulders, tied as a fashion scarf, or wrapped as a cowl.



Endless Summer Shawl

This image courtesy of [mooglyblog.com](#)

### Materials:

- US – H, 5.0 mm hook
- 459 yds Fingering / 4 ply weight yarn (Zauberball in Fuchsia shown)
- Gauge: 15 sts x 14 rows = 4" in pattern
- Finished size: 60" long, 11.5" wide
- To change the size, add or subtract a multiple of 8 sts.

**Instructions:**

Row 1: Ch 203. Dc in the 4th ch from hook, dc in the next ch, ch 3, skip 3 ch. \*Dc in the next 5 ch, ch 3, skip 3 ch. Repeat until 3 ch remain, dc in each of the remaining ch. Turn. (201 sts)

Row 2: Ch 2 (does not count as st), skip the first 2 sts, dc in the next st. \*Working over the ch 3 from the previous row, work 3 dc sts into the center ch of the skipped ch section of the starting chain directly below. Dc in the next 5 sts. Repeat from \* until 6 sts remain. Work 3 dc into the center ch of the starting chain below the last 3 ch section, then dc2tog over the next st and the last st (top of the ch 3), skipping a st in the middle. Turn. (197 sts)

Row 3: Ch 2, skip the first 2 sts, dc in the next 3 sts, ch 3, skip 3 sts. \*Dc in the next 5 sts, ch 3, skip 3 sts. Repeat from \* until 5 sts remain, dc in the next 2 sts, then dc2tog over the next st and the last st, skipping a st in the middle. Turn. (193 sts)

Row 4: Ch 2, skip the first 2 sts, dc in the next st. \*Working over the ch 3 from the previous row, work 3 dc sts into the center ch of the skipped ch section of the starting chain directly below. Dc in the next 5 sts. Repeat from \* until 6 sts remain. Work 3 dc into the center ch of the starting chain below the last 3 ch section, then dc2tog over the next st and the last st, skipping a st in the middle. Turn. (189 sts)

Row 5 – 28: Repeat Rows 3 – 4. (The st count will reduce by 4 sts every row, so that at the end of Row 28 there should be 93 sts.)

Row 29: Ch 2, skip the first 2 sts, dc in the next st. Dc2tog over the next 2 sts, ch 3, skip 3 sts. \*Dc in the next 5 sts, ch 3, skip 3 sts. Repeat from \* until 5 sts remain, dc2tog in the next 2 sts, then dc2tog over the next st and the last st, skipping a st in the middle. Turn. (87 sts)

Row 30: Ch 2, skip the first st, dc in the next st. \*Working over the ch 3 from the previous row, work 3 dc sts into the center ch of the skipped ch section of the starting chain directly below. Dc in the next 5 sts. Repeat from \* until 5 sts remain. Work 3 dc into the center ch of the starting chain below the last 3 ch section, then dc2tog over the last 2 sts. Turn. (85 sts)

Row 31: Do not ch. Skip the first st, sc in the next st and in each st across until 1 st remains, sl st in last st. Turn. (84 sts)

Row 32: Do not ch. Skip the first st and sl st in the next st and in each st across until 1 st remains. Break yarn and use seamless join in last st to finish off. (82 sts)

## Flame and Ember Shawl

By: [ABC Knitting Patterns](#)

This Flame and Ember Shawl is sure to remind you of the autumn season. Using a lace weight yarn, work up this free crochet shawl pattern using three strands of yarn and contrasting colors.



Flame and Ember Shawl

This image courtesy of [abc-knitting-patterns.com](#)

### Materials:

- Lace weight 100% wool yarn 780 m (853 yds)/ 100 g red - 3 skeins
- Lace weight 100% wool yarn 780 m (853 yds)/ 100 g black - 5 skeins
- **Hook** size E (3.5 mm) OR SIZE NEEDED TO OBTAIN GAUGE.

The shawl was crocheted using 3 strands of yarn. The color gradient achieved by substituting one strand of red yarn with a strand of black yarn after each 20 rows.

**Gauge:** 5dc = 0.8" (2 cm)

**Size:** Width - 98" (250 cm), depth - 49" (125 cm) without a fringe.

**Instructions:** See drawing below.

Crochet back and forth.

Start with 3 strands of red yarn. Chain 10, join with a sl st to form a ring.

Row 1: ch 3, 10 dc into the ring.

Row 2: ch 5, 4 dc over the 2nd - 5th dc from the previous row, ch 3, 1 sc, ch 3, 4 dc over the 4 last dcs, ch 2, 1 dc.

Row 3: ch 7, 5 dc over the 4 dcs from the prev row and the last on into the ch 3, ch 9, 1 dc into ch 3, 4 dc over the 4 dc from the prev row., ch 4, 1 dc.

Row 4: ch 5, 5 dc into the ch 4, ch 3, 1 sc in to the 3rd dc from the prev row, ch 3, 4 dc into ch 9, ch 3, 1 sc into ch 9, ch 3, 4 dc into ch 9, ch 3, 1 sc into the 3rd dc from the prev row, ch 3, 5 dc into ch 7, ch 2, 1 dc.

Row 5: ch 7, 5 dc, ch 5, 5 dc, ch 9, 5 dc, ch 5, 5 dc, ch 4, 1 dc.

Rnd 6: ch 5, 5 dc into ch 4, ch 3, 1 sc, ch 3, 5 dc into ch 5, ch 3, 1 sc, ch 3, 4 dc, ch 3, 1 sc, ch 3, 4 dc into ch 9, ch 3, 1 sc, ch 3, 5 dc, ch 3, 1 sc, ch 3, 5 dc into ch ch 7, ch 2, 1 dc.

Rnd 7: ch 7, \*5 dc, ch 5\*, repeat 2 times, 5 dc, ch 9, 5 dc, \*ch 5, 5 dc\*, repeat 2 times, ch 4, 1 dc.

Rnd 8: ch 5, 5 dc, ch 3, 1 sc, ch 3, \*5 dc, ch 3, 1 sc, ch 3\*, repeat 2 times, 4 dc, ch 3, 1 sc, ch 3, 4 dc, \*ch 3, 1 sc, ch 3, 5 dc\*, repeat 2 times, 5 dc, ch 2, 1 dc.

Rnd 9: ch 7, \* 5 dc, ch 5\*, repeat 3 times, 5 dc, ch 9, 5 dc, \*ch 5, 5 dc\*, repeat 3 times.

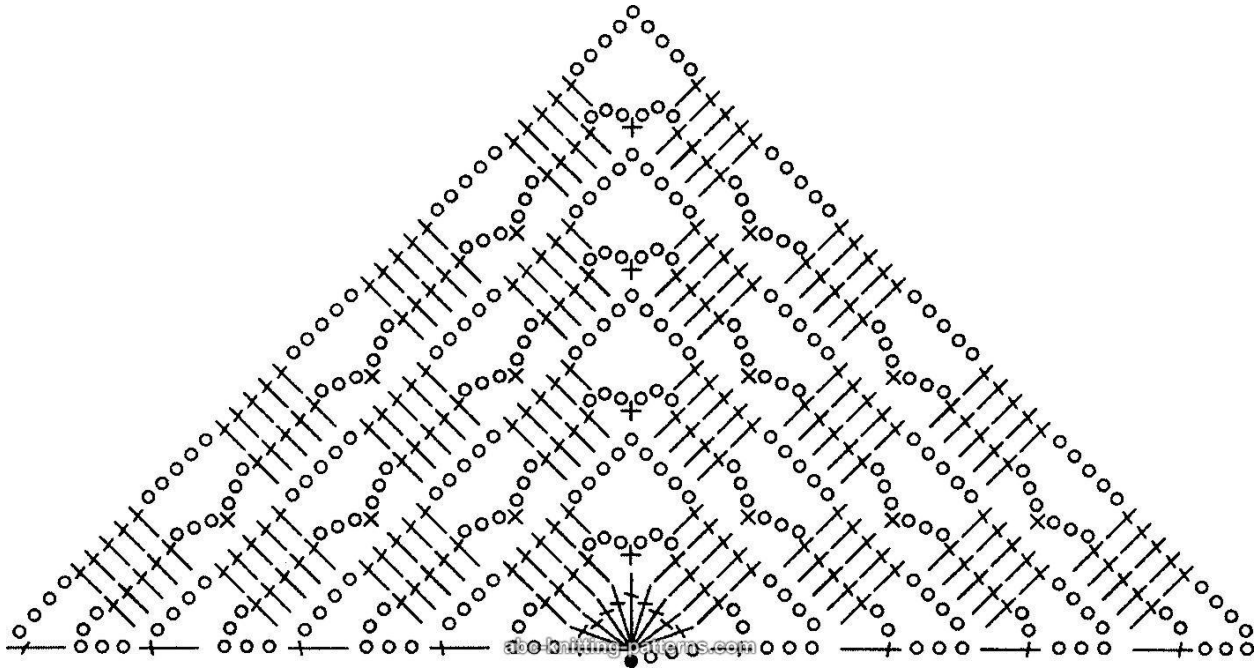
Repeat rows 8 and 9 adding one group of 5 dc at the beginning and the end of each even row.

Row 22: Continue with 2 strands of red yarn and 1 strand of black yarn.

Row 42: Continue with 1 strand of red yarn and 2 strands of black yarn.

Row 62: Continue with 3 strands of black yarn. Crochet 81 rows. Tie off.

Make black fringe 5-5.5" (13-14 cm).







We'd like to extend our thanks to the independent bloggers and companies for allowing us to reprint their patterns in full as a part of this free eBook.

**Special Thanks To:**

- Jennifer Dickerson from [Fiber Flux](#)
- April Folts for [April Draven Designs](#)
- Tamara Kelly from [Moogly](#)
- Elaine Phillips from [ABC Knitting Patterns](#)
- Karen Drouin for [Naturally Caron](#)
- Darlene Dale for [Caron Yarn](#)
- Kim Guzman for [Caron Yarn](#)
- Tammy Hildebrand with Cari Clement for [Caron](#)
- Nazanin S. Fard for [Red Heart Yarn](#)
- Marianne Forrestal from [Red Heart Yarn](#)
- Kimberly K. McAlindin for [Red Heart Yarn](#)
- [Lion Brand Yarn](#)
- [Bernat](#)

